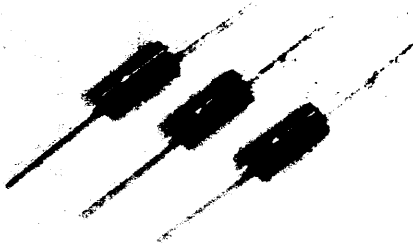


LOW CAPACITANCE BI-POLAR TRANSIENT SUPPRESSORS



LCC-2
thru
LCC-16

FEATURES

- Low Capacitance
- Low Noise
- High Surge
- Rapid Response

In applications requiring the reliability, sharp clamping, and rapid response of Silicon Junction Type Transient Voltage Suppression where signal frequency requires low device capacitance, the Semicon LCC Series is recommended.

The LCC Series utilizes Semicon's Mono Hard Solder Stack Process resulting in rugged low, noise, thermally stable devices with low capacitance and high surge capability. They will protect signal lines from induced or direct fault voltage transient stress in a wide range of Digital, Analog, Telephone, and CATV applications.

MAXIMUM RATINGS

- Surge 30 amps, 8.3 msec
*100 amps, 1.0 msec
- Operating & Storage Temperature
-65°C to +150°C
- t clamping (0 volts to V_{MIN}): $< 10^{-8}$ secs.
- Steady State Power: 5 watts @ 50°C

ELECTRICAL CHARACTERISTICS @ 25°C Ambient (Both Directions)

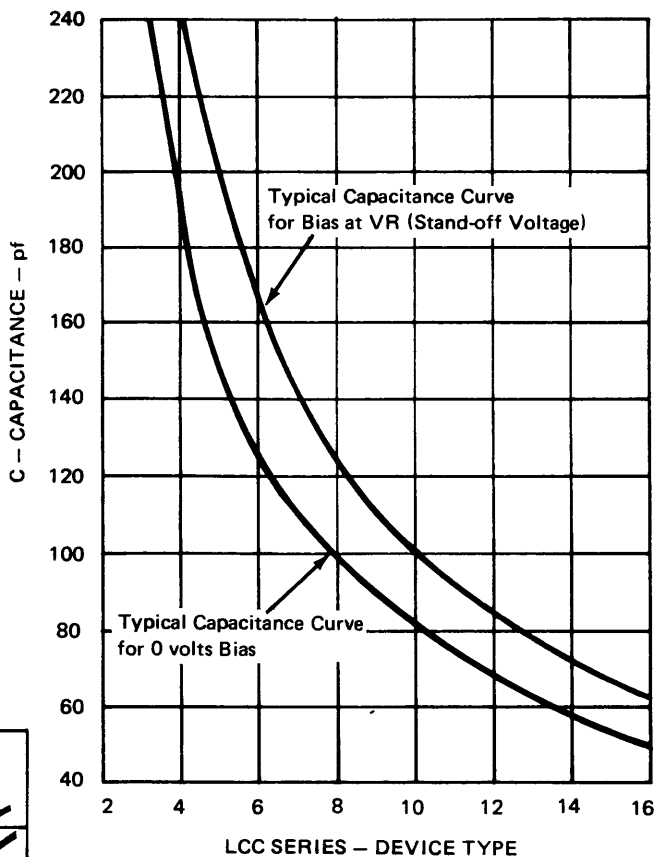
SEMICON PART NUMBER	BREAKDOWN VOLTAGE @ 10 mA BY ±5%	STAND-OFF VOLTAGE VR	MAXIMUM LEAKAGE CURRENT @ VR	MAXIMUM CAPACITANCE @ 0 V, 1 MHz	TYPICAL TEMP. COEFF. OF BV
	VOLTS	VOLTS	μA	pf	mv/°C
LCC-2	1.33	.8	10	517	-4
LCC-3	2.0	1.2	10	319	-6
LCC-4	2.7	1.6	10	259	-8
LCC-5	3.3	2.0	10	191	-10
LCC-6	4.0	2.4	10	159	-12
LCC-7	4.7	2.8	10	140	-14
LCC-8	5.4	3.2	10	130	-16
LCC-9	6.0	3.6	10	114	-18
LCC-10	6.7	4.0	10	102	-20
LCC-11	7.3	4.4	10	93	-22
LCC-12	8.0	4.8	10	86	-24
LCC-13	8.7	5.2	10	79	-26
LCC-14	9.4	5.6	10	74	-28
LCC-15	10.0	6.0	10	67	-30
LCC-16	10.7	6.4	10	62	-32

*See Figure 1

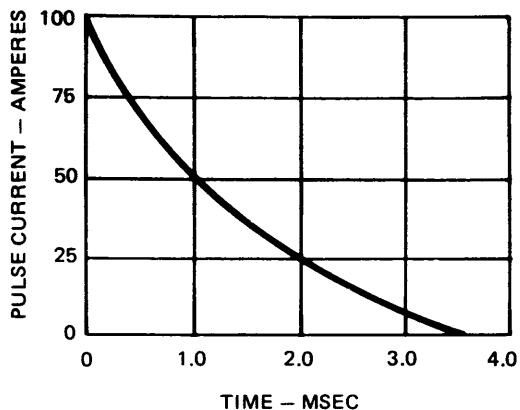
Semicon
INC.



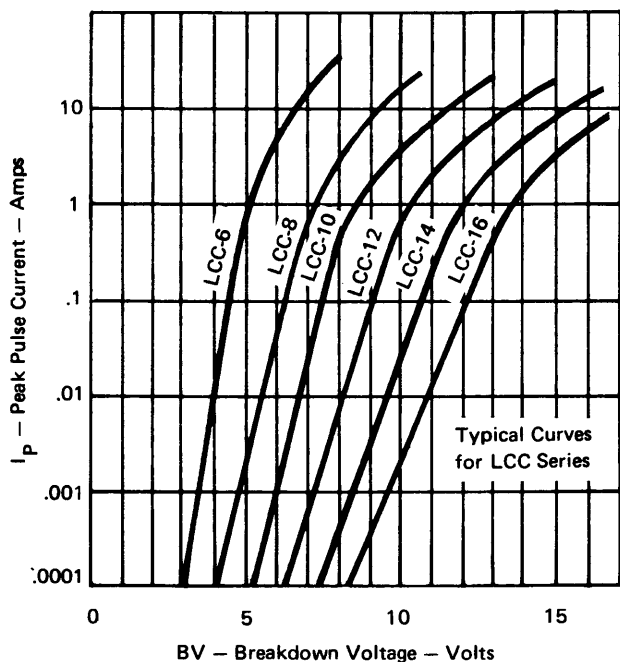
TYPICAL CAPACITANCE CURVES FOR LCC SERIES SURGE SUPPRESSORS (FIG. 2)



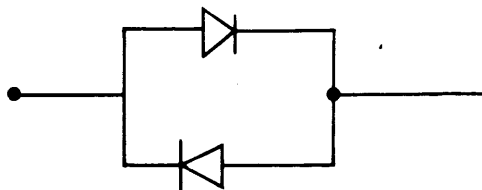
PULSE CURRENT VS TIME (FIG. 1)



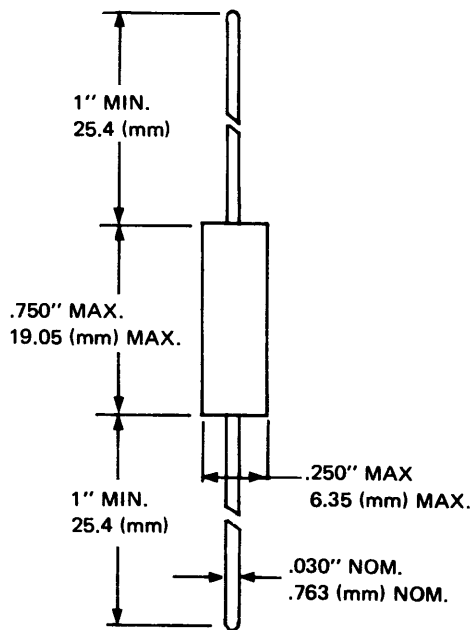
VOLTAGE CURRENT CHARACTERISTIC CURVES (FIG. 3)



LCC SERIES ARE BIPOLAR DEVICES, OPPOSITE POLARITY IN PARALLEL



PACKAGE OUTLINE



Mechanical Data
Case: Wet Cast
Leads: Silver Clad



AURIEMA GMBH

71 HEILBRONN, UHDESTASSE 33
TELEFON 07131 / 5 30 66 · TELEX 07 28 639